

# L. S. Q. G. NEWSLETTER

Lee's Summit Quilter's Guild, established 1983

## A Message from our President

This year is flying by. School has started so it won't be long & we will be setting up for the quilt show. Please be sure & sign up for a session to help make the show run smoothly. It can only succeed with participation from our guild members. It is also a good way to get to know each other.

I was amazed at the number of members who signed up to help with the dolls for Haiti. It warms my heart to know we have so many giving people in our guild. I have reserved a room for Tuesday, August 27th, at the church, to make up kits. I will have kits available at the next guild meeting for anyone who would like to make a doll. I will also plan on staying after the meeting if anyone wants to head upstairs & work on the dolls. 100 sounds like a lot but with all your help it will be attainable. If you take a kit at the September meeting I would like to have them completed & returned at the October 14th meeting.

Don't forget to get on the blog & register your quilts for the quilt show. We have advertised hundreds of quilts so let's make it happen.

Happy sewing, *Donna*



### September 9: First Quilt/Ugly Quilt

Bring your first quilt and/or ugly quilts to the September meeting and we will have a super show and tell. If you have two quilts, bring them both.

UFO Challenge: This is the last month for the current UFO project.

### September 16: Fall Frolic – Woods Chapel United Methodist Church

### October 14: Nellie Mueller

Program: How Long Have You Been a Bag Lady?

Workshop: Charm Party Tote 1-4pm – all skill levels

Contact Georgia Stull at [heartlandquiltworks@gmail.com](mailto:heartlandquiltworks@gmail.com) to reserve your spot. Sign-ups will also be available at the September meeting.

Join Nellie Mueller as she shows us how to construct a "Charm Party Tote" out of coordinated cotton fabrics. Learn to use fusible batting, add embellishments, customize pockets, add a magnetic snap and metal feet, and more. Whether it's used for style, utility or fun, your new bag will be make a personal statement!

\$25, + supplies, + pattern \$9 (supply list available when you sign-up)

Some pre-class preparation

### October 21: Bee – at The Duck Pond Building in Raintree Lake 9am-4pm

### November 11: Quilt College

## Lee's Summit Quilters Guild Minutes of the Meeting of the General Membership, August 12, 2013

President Donna Bland called the meeting to order at 9:04 a.m.

Minutes of the July 8, 2013 meeting were approved as published.

**Old Business:** None

**New Business:** Donna Bland reported that during the Guild Board meeting it was decided that starting in September, the free table will not be available to the general membership until the break to allow time for donated items to be sorted and organized by the Guild Projects Committee. The break will be extended to 20 minutes to give those interested time to look.

### **Committee Reports:**

**Membership:** Annual membership dues of \$30.00 are due by the September meeting.

**Corresponding Secretary:** Diana Walden received information about quilt shows in Independence, MO, Ottawa, KS, Marshall, MO, and Mtn. Home, AR. She also shared information received from Ivy Jeans Ozark Farmstead Retreats.

**Programs:** Today's workshop - Fusible Flowers - will begin after lunch. There is no program planned for September. The October program will be Nellie Muller – Bags. The workshop following is \$25.00. A supply list will be available soon. November's program will be Quilt College. They are still looking for presenters. Please contact Georgia Stull or Jennifer Dick to volunteer or if you have an idea for a station.

**Bee Keeper:** Elly Gray reported that the Bee is next Monday, August 19<sup>th</sup>, at Raintree Duck Pond. Directions are in the newsletter/blog. There will be no Bee on September 16<sup>th</sup> since that is the date of the Fall Frolic.

**Fall Frolic:** Fall Frolic will be Monday, September 16<sup>th</sup>, at the church. The lunch menu is Soups, Salads, and Desserts. There is a sign-up sheet for food. Guild projects will be available to work on in addition to bringing personal projects.

**Guild Outreach:** Donna Bland explained that the Guild Board voted to change to name of the Charity Quilts Committee to Guild Outreach.

Sharon Neuer reported that the focus for quilts this year will be Hope House and the Cancer Center. Quilt tops should be approximately 40" x 60". There will be kits available for members to use to make tops. Donations are welcome. The goal this year is 200 quilts which is 50 more than last year. There will be cutting days to make kits at the Bees. Eleven kits are ready for members today.

**Dolls for Haiti:** Donna Bland reported on an opportunity for the Guild membership to make cloth dolls for children in Haiti. Discussion followed. A sign-up sheet was provided to ascertain interest. A tentative date of August 20<sup>th</sup> was set for making kits.

**Guild Projects:** Nancy Solsberg Fat Quarters: There are over 200 fat quarters so far which will make at least two baskets. Donations are still being accepted. Ticket sales will begin in September. Charm Square Swap: This is the last month. Thank you for your participation. Round Tufts: Nancy Solsberg – 3 charity quilts; Maxine Howard – BOM quilt; Elly Gray – coin purses, English paper piecing table topper. UFO Challenge Show & Tell: Paula Gilmore – Hawaiian stack-n-whack quilt and Butterflies in Flight wall hanging; Sheryl Murray – Dresden Plate quilt; Lora Meadows – Christmas Kaleidoscope quilt and International Intrigue Mystery Quilt 2002; Peggy Patterson – English Garden clothesline table quilt; JoAnn Hudson – alphabet quilt; Nancy Solsberg – Antique Arrow quilt; Juanita Brents – Tuesday Garden Club quilt; Racene Bolin – Lincoln BOM; Debbie Smith - 2010 Thimbleberries; Judy Sewell – Fossil Fern quilt; Jessie Harvey – Summer's Log Cabin; Martha Lear – Heartstrings; Cheryl Gross – Nativity wall hanging; Carole Lindgren – All Around the Neighborhood; Judy Ricks – Harmony Stars. The door prize went to Paula Gilmore.

In September, members are asked to bring their first quilt or an ugly quilt. You do not need to sign up. Nancy was told that Rustic Yearnings Quilt Shop will remain open. Nancy will continue Guild Projects next year. Please contact her with your ideas and suggestions.

**Bus Trip:** The trip to Des Moines will be on Thursday, October 3<sup>rd</sup>. The cost is \$45.00 which includes snacks, drinks, and tickets to the quilt show.

**Quilt Show:** Elaine Boten and Judy Sewell. The quilt show is set for November 1<sup>st</sup> and 2<sup>nd</sup> at WCUMC. Diane Cox reported that registration deadline is September 16<sup>th</sup> and forms are available online and hard copy. The categories will be PIECED (sub-divided into small, medium, large, extra-large), HAND APPLIQUE, MACHINE APPLIQUE, HAND EMBROIDERY, MACHINE EMBROIDERY, GROUP ART, and SPECIALITY ITEMS. Judy Rick is accepting registrations for the bed-turning event. Antique quilts should be 50+ years old, and baby quilts should be 20+ years old. Guild Corner chair Juanita Brents requested projects from members to display including Round Tufts, UFOs, Outreach, and samples from Programs/Workshops. Hospitality committee chairs Elly Gray and Sue Williams passed around sign-up sheets for food items for the hospitality break room for Friday and Saturday. Sign-ups will also be accepted in September and October. Volunteer chairs Mary Lou Pick and Sheryl Murray passed around sign-up sheets for Thursday set-up through Saturday take-down. Most work times are 2 hours. This year there will be a check-in station for volunteers at the show. The sign-up sheet will also be available in September and October. Silent Auction chair Becky Camacho announced more items are needed. Boutique chair Nancy Solsberg announced that donated magazines may be dropped off from 9-12 on Thursday at the church during quilt check-in. There are no boutique item kits ready today, but members will be able to work on boutique projects during the Bees and the Fall Frolic.

**Attendance:** There were 99 members in attendance and 4 guests: Pat Lynch – Lee’s Summit, Lou Cornett, Paula Tyler – Odessa, MO, and Vicky Hunter – Overland Park, KS. Two new members are June Hayes and Carol Gregg, both from Belton, MO.

**Show and Tell:** Showing this month include: Sharon Neuer – 2 Silent Auction wall hangings; Georgia Stull – hexie quilt; Pat Wheeler – Coneflower quilt; Judy Sewell – Birthday wall hanging; Victoria Gibbs – donation quilt; Anita Bridges – Sunshine crib quilt; Cheryl Gross – bright quilt for Haiti; Georgene Jurgensen – bags for boutique, pot holders, wall quilt; Judy Kane – Techy bag (ipad); Jan Lally – Butterfly Breeze; Earlene Vaughn – bunny baby quilt, chicken quilt; Linda Hammontree – Southern Ladies & Gentlemen bed quilt; Betty Willeke – music quilt, round curve quilt, Pennie Stafford – MU bag; Vickie Gordon – fruity topper, tumbling block wall hanging; Jean Brown – 50 shades of gray; June Hays – plain and pieced blocks made from leftovers. The following shared items were from last month’s Pat Speth’s workshop: Gayle Hawley – workshop blocks; Marylou Cramsey – workshop blocks; Mary Lou Pick – workshop blocks; Joy O’Kane Tillie’s Treasure blocks; Racene Bolin – Tillie’s Treasure.

**Door Prizes:** Pat Wheeler – Back to Charm School book and a fat quarter; Maxine Howard – Little Quilts for Little Kids book and a fat quarter; Joy O’Kane – Scrap-Basket Beauties book and a fat quarter; Jolene Johnson – My Favorite Duffle Bag pattern and fat quarters; Denice Kilmer – The Bags Have It booklet and fat quarters; Linda Hammontree – Grandma’s Back Yard pattern and fat quarters; Patty Lynch – Windy Point Park pattern and fat quarters.

Business meeting was adjourned.

Business meeting was followed by the program “Finding Color in Your World” by Cleo Mounday.

The Guild was dismissed at 11:30 a.m.

Respectfully submitted, Terri Budzinski, Acting Recording Secretary

# ~ ~ Fall Frolic ~ ~

**When:** September 16<sup>th</sup>. This will take the place of the Bee for September.

**Where:** At the Church, upstairs in the Lecture Hall, 9 am - 4 pm. (there is an elevator that can take you upstairs)

There will be a potluck soup and salad lunch. Sign-up sheets will be available at the September meeting.

The Fall Frolic will be devoted to making items for the quilt show boutique; donation dolls for the Hatti orphanage; donation quilts, and guild members' personal projects.

## October Workshop – Charm Party Tote

October 14, 2013 We will welcome Nellie Mueller to our guild! Nellie is from Pacific, MO. She has been a member of the Missouri State Quilters Guild for 23 years and was just chosen as the second inductee into the MSQG Hall of Fame, also known as the Galaxy of Stars. She is a well-known quilter and seamstress.

Her lecture/trunk show will be "How Long Have You Been a Bag Lady?" Nellie will explore the materials, tools, designs and skills that will produce a professional bag or gift for any occasion.

Nellie will also present a workshop, "Charm Party Tote" The workshop will be held on the afternoon following the meeting, October 14, 2013. You will need to bring your lunch so the workshop can begin in a timely manner.

Cost of the workshop is \$25, cost of the pattern is \$9 and a supply list will be provided.

July 2013 Treasurers Report				
Receipts:	2014 Tall Oaks Deposits		\$	4,060.00
	Programs		\$	310.00
	Membership - 2014		\$	750.00
	Name Badges		\$	24.00
			\$	5,144.00
Disbursements:	Rent		\$	150.00
	Program - July		\$	1,206.98
	Program - Rent		\$	25.00
	Program - Pat Speth Hotel		\$	249.48
	2014 Tall Oaks - Prizes		\$	302.66
	General Fund - Curtain Rods		\$	26.00
	Newsletter - June/July		\$	20.70
	Quilt Show Ad - Quilter's Newsletter		\$	35.00
			\$	2,015.82
Net Receipts & Disbursements:			\$	3,128.18
Balance in Check Book			\$	26,134.33
Balance for Tall Oaks 2014			\$	6,182.41
LSQG Balance			\$	19,951.92

## Tall Oaks Retreat 2014 dates:

1<sup>st</sup> session (weekend)  
March 21 – 24 F, Sa, Su, M

2<sup>nd</sup> session (weekday)  
March 24 – 27 M, Tu, W, Th

# 2013 LSQG Quilt Show – Nov 1 & 2

## **Registration:**

### **WE NEED MORE QUILTS!**

Register your quilts online by September 16<sup>th</sup>:

[http://lsqg.blogspot.com/p/blog-page\\_28.html](http://lsqg.blogspot.com/p/blog-page_28.html)

scroll past the list of vendors and you will see the link.

There is also a link to print out a paper copy of the registration form and fill it out if you are uncomfortable with registering directly online. Or get a paper copy from Diane Cox at the September guild meeting. Turn this completed form into me by September 16<sup>th</sup>.

Bring your registered quilts on Thursday, October 31<sup>st</sup>, to the church between 9:30 am to 11:30 a.m. If anyone cannot bring their quilts at this time, please get with me to work out other arrangements. [Diane9617@gmail.com](mailto:Diane9617@gmail.com) or 816-820-5541. You will pick up your quilts at the church on Saturday after the Quilt Show is taken down and sorted 5:00pm to 5:30pm. If you cannot pick up your quilts at this time, please get with me to work out other arrangements.

If you have any questions at all, please contact me! Diane Cox

## **Silent Auction**

The Silent Auction Committee is looking forward to another great year from our members with 30 to 40 items submitted to the auction. Items will be accepted anytime.

Any theme is acceptable, but keep in mind the holidays around Quilt Show time--Thanksgiving, Christmas, New Years'. Suggested projects include:

**Miniatures or wall hangings** sized from 12 inches to 25 inches.

**Table runners** approximately 17 inches wide to 36 inches long.

**Table toppers** up to 36 inches round or square.

**Place mats**

**Purses or tote bags**

**Baskets**

We appreciate your willingness to donate your items. Thanks.

## **Boutique:**

Keep these items coming! Bring your books and magazines to the church on Thursday, October 31<sup>st</sup>, before noon.

## **Categories**

The Quilt Show Committee has announced the nine Viewers' Choice Categories for the 2013 show. Registration is available online or paper form. Deadline is September 16.

### **1). PIECED**

Size divisions will be determined by the registration committee based on the number of entries. There could be small, medium, large and extra-large divisions.

### **2). HAND APPLIQUE**

### **3). MACHINE APPLIQUE**

### **4). HAND EMBROIDERY**

5). **MACHINE EMBROIDERY**

6). **GROUP QUILT**

The quilt must be owned by a guild member. One or more guild members must have participated in the making of the quilt top.

7). **ART QUILT**

Original design or commercial pattern

8). **SPECIALITY ITEMS**

This category includes wearables, totes, purses, home décor, and aprons.

9). **BEST IN SHOW**



## **Membership Dues**

Membership dues are 30.00. Please pay these at the September meeting if you haven't already done so. For your quilts to be in the November Quilt Show, your dues will need to be paid for next year. And having your dues paid, will also get you free entry into the quilt show. If you would rather mail your dues to Jan Lally, her address is 326 Bluebeach Point, Lee's Summit, MO 64064

## **Bus Trip to Des Moines**

If you are interested in going on the bus trip to Des Moines AQS Show Oct 3rd I need to have payment by August 31st. The cost is \$45 which includes admission to the show. We will be leaving around 6:45 from the parking lot next to Goodyear tire in Lee's Summit (where Waids restaurant used to be).

We are purchasing the tickets in advance to avoid standing in line that day, plus we are getting a discounted group rate. The tickets have to be ordered by September 1st. We only have 10 openings left. If you would like to go, please contact Janie Wagner at [roarkl@yahoo.com](mailto:roarkl@yahoo.com) or [816-804-5434](tel:816-804-5434) as soon as possible please. If you have any questions please give Janie a call.



## **LSQG Outreach**

The Guild's efforts for community charity quilts will be focused on two organizations this coming year. We are changing the name so as to encompass more of our activities and will be named Lee's Summit Quilters' Guild Outreach program.

The Guild will primarily support two organizations with quilts. The first is Hope House, a facility located in Lee's Summit that houses victims of domestic abuse. Oftentimes, the women and children arrive with nothing except the clothes on their backs. The other is the Cancer Center near our meeting place which is operated by KU.

We request any quilts that are made/given to this program be in the 40"-42" by 55"-60" size range.. If you have just the blocks, or only a quilt top, we can put them to good use.

(cont'd on next page)



The main pattern we are making this year is a snowball block (but of course we will accept any others). You can make one or more 9.5" snowball blocks, an entire quilt top, or even complete the quilt. Not all of the blocks need to match, either! When you have some blocks, bring them to the meetings and turn them in. We will also have kits (to go out in various stages) with all the components in them necessary to finish a quilt. It's a great opportunity to practice your stitching and quilting while doing something good for the community.

We also need solid fabric, preferably neutrals, but we will take any color. Please think of this program as you clean out your stash or "inherit" fabric from friends. And be sure to stop by and get your outreach kit!

## Snowball Pattern for Lap Quilts

35 – 9.5 inch squares for snowballs. (all one fabric or scrappy) If using all one fabric it requires 9 – 9.5 inch width of fabric strips or approx. 2.25 yards

140 - 3.5 inch squares for corners (all one fabric or scrappy) If using all one fabric it requires 12 width of fabric strips at 3.5 inches sub cut to 3.5 inch squares or approx. 1.25 yard

5 - 2.5 inch strips for binding from same or coordinating fabrics

Instructions: Using 9.5 inch strips, sub-cut into 9.5 inch squares

Using 3.5 inch strips, sub-cut into 3.5 inch squares.

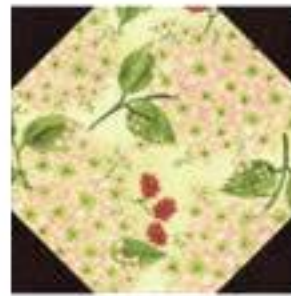
Place one 3.5 inch square on each corner and sew as shown in the picture below.



Draw Diagonal  
Lines on Squares



Sew Directly on  
Diagonal Lines  
and Trim Corners



Press Corners  
Right Side Up

Layout and sew snowballs - 5 squares wide and 7 squares deep.

Finished size of approx. 45 X 62.

Note: Some packages contain binding and back fabric. Be sure to return these with the finished quilt top in the plastic bag to the Guild Outreach committee. Any extra fabric can be returned or discarded.

Call if you have any questions or problems:

Sharon Neuer 913 206-3465, Georgene Jurgensen 816 591-0251

**Lee's Summit Quilters' Guild**  
Diane Cox, Newsletter Coordinator  
9617 Windsor Drive  
Lee's Summit, Missouri 64086

## **First Class**



# **Next Meeting**



**September 9, 2013      9:00 a.m.**

**Remember your show and tell item(s) And your name badge**  
**Woods Chapel United Methodist Church, 4725 NE Lakewood Way, Lee's Summit, MO 64064**  
You can find the Lee's Summit Quilters' Guild website at: <http://lsqg.blogspot.com/>